

Leigh on Sea Town Council News

issue 06

The above photograph 'Church Steps Leigh' was taken by
Linda Paul a member of Leigh on Sea Camera Club.

www.leighcameraclub.com



Arts & Culture | Clubs & Societies | Churches
Council Facilities & Outside Spaces



So much to tell you...an eventful year for LTC as we celebrated our 21st anniversary this year inviting many friends who have played or do play a big part with LTC. It is with sadness that the recently retired Town Clerk, Paul Beckerson, who died this summer was not able to celebrate with us. The community centre goes from strength to strength and has become a vibrant hub of activities and classes. I can't believe some local people are still unaware of what's on offer inside and hope that this magazine gives you a taster of what lies beyond the front entrance. The farmers market is a big hit and now spills out onto the front forecourt with cheeses, flowers and tool sharpening on offer. We have been given a fantastic textile piece by our latest Artist in Residence and are pleased to announce our partnership with Leigh Art Trail has resulted in a years worth of activities and exhibitions on our award winning Art Wall. Our local allotments feature with the latest news and we have two great pieces on Belfairs Woodland Centre and RSPB celebrating local wildlife and nature.

In promoting Cycle Southend we hope you will be tempted to leave your cars at home in 2018 and work off some of that Christmas pudding by cycling instead.

Jane Ward, Editor.

Calendar

December

Christmas Fayre – Leigh Community Centre	2nd December
Carols on Strand Wharf	9th December
Christmas Farmers Market – Leigh Community Centre	23rd December
Community Centre Closed	24th December – 2nd January

January

Policy & Resources Committee Meeting	2nd January
Planning, Highways & Licensing Committee Meeting	9th January
Full Council Meeting	16th January
Planning, Highways & Licensing Committee Meeting	23rd January

February

Full Council Meeting	6th February
Community Facilities Committee Meeting	6th February
February Half Term Activities – Leigh Community Centre	12th - 16th February
Planning, Highways & Licensing Committee Meeting	13th February
Leigh Farmers Market – Leigh Community Centre	16th February
Environment & Leisure Committee Meeting	20th February
Planning, Highways & Licensing Committee Meeting	27th February

March

Policy & Resources Committee Meeting	6th March
Planning, Highways & Licensing Committee Meeting	13th March
Leigh Farmers Market – Leigh Community Centre	16th March
Full Council Meeting	20th March
Planning, Highways & Licensing Committee Meeting	27th March

April

Easter Break Activities – Leigh Community Centre	2nd – 13th April
Community Facilities Committee Meeting	3rd April
Planning, Highways & Licensing Committee Meeting	10th April
Environment & Leisure Committee Meeting	17th April
Leigh Farmers Market – Leigh Community Centre	20th April
Annual Community Meeting – Leigh Community Centre	20th April
Planning, Highways & Licensing Committee Meeting	24th April

May

Policy & Resources Committee Meeting	1st May
Planning, Highways & Licensing Committee Meeting	8th May
Full Council Meeting	15th May
Leigh Farmers Market – Leigh Community Centre	18th May
May Half Term Activities	28th May – 1st June

June

Leigh Art Trail	9th – 16th June
Leigh Farmers Market – Leigh Community Centre	15th June

Paul Beckerson – In Memoriam



Leigh on Sea Town Council were left saddened by the loss of their former Town Clerk, Paul Beckerson in July. Paul had been the Town Clerk in Leigh for seven years until his retirement in April and made a significant contribution to the Council in its history, particularly in regard to setting up the Community Centre.

Paul passed away in the early hours of Monday 17th July from respiratory failure at Southend Hospital surrounded by his family. He was aged 68 and was survived by his four children and second wife Lyanne, whom he married in January 2016. Paul had survived Oesophageal Cancer after an operation and five months of chemotherapy in 2016, making a full return to health. After he retired he set out to study a degree in History but then developed a lung infection which later advanced to pneumonia.

Paul was educated at Lancastrian Boys School and studied Community Governance at the University of Gloucester and Computer Engineering at the University of Brighton. Paul had a great love for music and spent much of his spare time DJ'ing and running clubs throughout the 70's, 80's and 90's in Bognor Regis.

He served as the Town Mayor of Bognor Regis in 1994/95 and was keenly involved in regeneration matters, he was a director of Bognor Regis Ltd, which was set up to boost the town's economy, from 1994 to 2001. Paul then became the Bognor Regis Town Council's Projects Officer for several years until he left to become the Town Clerk at Leigh on Sea in 2010.

Paul's wife, Lyanne Beckerson, shared fond memories of him.

"He led the Town Council in taking over a community centre that was going to close. He was one of those people who made things happen,"

"He was very amenable as a person. He was always looking to help the community and he loved helping people."

"He wanted to be in a position where he was in charge and could make things happen – and that's what he managed to do. He was very much a social politician."

Leigh on Sea Town Councillor Donald Fraser said in a eulogy for Paul's funeral: "Those of us who got to really know Paul are sad at the loss of a great man. As soon as I met Paul seven years ago, I was most impressed.

"Like me, Paul was a great one for detail. He had a real working knowledge of the numerous rules and regulations covering all aspects of Town Council activities.

"He really put heart and soul into the job, working many hours of unpaid overtime. Paul did good work allowing us to become a Quality Council and spent valuable time in helping to train his successor."

Paul will be sorely missed in the Leigh on Sea Community and our thoughts are with his family and friends.

Celebrating 21 Years

On Friday 14th June 1996 the first meeting was held of this newly formed parish Council where the decision was made under the appropriate Local Government Act that Leigh on Sea should have the status of a Town, hence Leigh on Sea Town Council was born. That very first meeting was held at Leigh Community Centre – it was almost as if it was meant to be that 16 years later the Council took over the running of the centre.

We are now half way through the 6th election cycle of the Council. Every administration has been non-political and every administration has worked hard to serve the residents of the Town. Leigh is particularly fortunate in attracting Councillors that bring a rich set of skills and experience to the Council and I'm proud to be representing the current administration this year as Chair.

Unfortunately not all residents know about us or what we do, but hopefully this is changing with our new website and use of social media. However for those that still enjoy the more traditional methods of information there is this magazine, now in its 6th issue. This is circulated twice yearly to 10,800 local households and premises, we are making every effort to ensure our residents know what we do, and what's on and how they can join in and contribute.

We are proud to be the only parished Council in the Southend Borough. I can't speak about how they felt about us at the start, we hope they now can see the benefit of having us as a partner in serving the town. It is clearly in all our interests to develop close associations with our primary authority. Our aim is to build strong relationships with both Councillors and officers at the Borough.

We are linked with the Essex Association of Local Councils and the 300 other local councils in Essex. EALC offers a wealth of training for both cllrs as well as our staff, an advice service for us all and wonderful networking opportunities. We were delighted to receive recently Leigh Town Council the Essex Association of Local Council Innovative Work Award for 2017 in the main for our arts projects within the centre.

Talking of awards, I was privileged recently to attend the Southend Adult Community College awards evening. David Skeels, now a member of our facilities staff completed an apprenticeship in April receiving the award Learner of the Year, Learning for Work.

So what has Leigh Town Council done over the past 21 years? Well it is actually a very big list so here's a sample of our achievements.

Our Community Centre – we now have on average 1,350 people attending classes at the centre every week, 72 regular hirers and on average 2,130 people visiting the centre weekly. From our children's classes to fitness, from arts to helping those coping with cancer, we thank all our hirers for continuing to help make the centre a vibrant hub of the community.

Christmas Lights – extended to London Road, The Broadway will have all new lights this year

Our events – from the May Day event in the past, to Leigh Lights and the new Summer Season on Strand Wharf to our children's' holiday programme that we run

Arts programme – artist in residence, affordable art wall, Room 6 is home now to a part of the community project piece that our last artist in resident Mary Lister was involved in. A new hanging system for the regular exhibitions on the Art Wall, very much inspired by Cllr Vivien Rosier

Strand Wharf – now a lovely public square in the heart of the Old Town

Community Café – Elsie's Place was our first community interest company that ran the café. We now have Lorna & Lottie's which is going from strength to strength.

Skate Park – currently part of a planned refurbishment process

Allotments – our 20 acres of calm in our busy town – aided by the very active allotment societies

Community Transport trips – our programme for our elderly residents who enjoy a wide variety of trips

Farmers Market – David Hammond voluntarily ran the market for so many years and we will always be most grateful. He has recently retired but we will continue his legacy

Hanging baskets – 88 are hung around the town and the parks dept at SBC where we purchase them from did us proud this year Helped fund **Bonchurch outdoor gym** and the library garden play equipment and the beach Paddling pool

Helped save the **Leigh Library** from closure



photo courtesy of Mark at Leigh Times

Litter picks – recently with the help of the British Legion but also we will try and link in with the Make Southend Sparkle campaign

Fund the First Aid post during the summer – we thank Joy and her St Johns team for tending to the wounded when necessary!

Leigh Town Council could not possibly have achieved all this without the hard work of its Councillors and staff working with the whole community so we would like to thank all of you who may have played, or do currently play an important part in Council and community life in Leigh. Your support and the association we have with you is essential to us and something we wished to recognise as we celebrate 21 years of Council life.

Letters of thanks...

I just wanted to thank you for inviting me to the Birthday Tea yesterday. It was great to meet so many people and it developed my awareness of Leigh Town Council. The event was really well organised at a really good facility.

David Walpole, Essex Fire

Just a short note to thank you for inviting Jill and I to your Tea Party yesterday. We had a lovely time.

Bob O'Leary, The Royal British Legion

This is a great big thanks for a lovely 21st Tea Party yesterday. From Helen who welcomed me, to the caretaker who found me a chair I could sit in, the kind people who fetched my tea, good food and great music. I'm Leigh born, same as my parents and grandparents, I'm very proud of Leigh and love all the improvements the Council have made. Here's to the next 21 years Thank you so much. Patricia



Leigh Community Centre is going from strength to strength, now going into its sixth year of trading. The nine rooms throughout the Centre are filled with interesting and diverse classes and groups, with the weekends booked out with weddings, parties, craft fairs and events!

There is something for everyone at the Centre with a host of fitness classes, baby groups, arts and music activities as well as regular courses and workshops. Check our website www.leighcommunitycentre.com for details of our classes and events.

New hirers of the Centre include 4 & 20 Blackbirds Choir, K & M Acro Training who offer gymnastics and dance for 4–14 year olds. Upsie Daisy Hair Tutorials who run 5 week courses in hair braiding. And new theatre groups “Scottee” and “N-Act” who recently put on a performance at the Centre entitled “Linked” about staying safe on the internet.

The Centre has also been utilised by Southend Borough Council for Public Consultation Meetings and drop in sessions on Family Works Fostering, the Shoreline Strategy, CCTV in the Town, School Catchment Areas, and Ambition Southend: Skills & Labour Public Consultation.

The Centre is also available for private hire and is the ideal location for any function. Weddings have become a major part of the Centre’s success, with ceremonies and receptions taking place throughout the year. The Centre offers affordable wedding packages and provides a perfect blank canvas for decorations.

Lorna and Lottie’s Café within the Centre is now entering its 3rd year of trading. A popular hub for yummy mummies and famous for its bacon rolls the Café now employs 12 members of staff. The Café also provides catering for parties and functions at the Centre, and provided the afternoon tea at the Council’s 21st Anniversary which was met with great delight.

To ensure that the Centre is always busy, Council staff also regularly plan their own events. Our monthly Farmers’ Market, Nearly New Fair, a variety of children’s activities throughout the school holidays and coming up on the 2nd December we have a huge Christmas Fayre; a festive shopping event with crafts and yuletide gifts and goodies.

The Centre will be closed for the Christmas break from December 23rd until 2nd January, we wish our hirers and patrons a Merry Christmas and a Happy New Year.

Community centre facilities committee report

The last six months have been busy for the Committee and we have been looking in depth into issues surrounding our maintenance and enhancement of the Community Centre to improve what we offer to the people of Leigh and the many groups who use the Centre throughout the week. We have a throughput of about 2000 people a week and because of this our Café, Lorna and Lottie's is able to open more and longer hours into some evenings and the weekend.

Our skate park is a centre for the youngsters and we have been looking at issues relating to works that are needed to keep it available and safe for the many who go there. We are also continuing to consult skate park enthusiasts for ways in which it can be improved.

Strand Wharf was a focal point for our Summer season of activities as well as the usual use of the Wharf by the Regatta and Folk Festival.

It is a pleasant and peaceful place to sit and while the hours away on non event days and is frequented by many visiting groups who take advantage of its marvellous views and open aspect.

Next year is going to be a busy year for the Committee as it progresses with its work in the Community Centre and we continue to look forward to receiving many more visitors and hirers in the coming months for festive occasions, weddings and parties as well as our excellent programme of childrens' entertainment in the holiday periods.



Nearly New Fair

After popular demand the Centre decided to run a Nearly New Sale in October. The Community Centre was full of savvy shoppers looking for a bargain with stalls offering pre-loved baby clothes, toys, equipment and accessories.

Children were also kept amused by a Mermaid Princess, glitter tattoos and stalls full of handmade children's gifts.

The event proved incredibly popular, with people still enquiring for stalls on the day and hundreds of parents visiting the Centre, so we will look to run this on a regular basis. Follow Leigh Community Centre on Facebook for all the latest updates.



Free Entry

KIDS ZONE

SUMMER SEASON ON STRAND WHARF, OLD TOWN LEIGH

SUNDAY 30TH JULY 2017

11.00 am - 4.00 pm

Your kids can enjoy fairground rides, crafts, games, storytellers, dance, music and character appearances. The Leigh Lions' Duck Race is also taking place this day.



Free Entry

MUSIC-ON-SEA

SUMMER SEASON ON STRAND WHARF, OLD TOWN LEIGH

SUNDAY 16TH JULY 2017

11.00 am - 4.00 pm

Pull up a deckchair and enjoy music from local artists and bands

Salvation Army | Belfairs Academy Choir | 4&20 Blackbirds
Yardarm Orchestra | Hoy Shanty Crew



Free Entry

ITALIAN PIAZZA

SUMMER SEASON ON STRAND WHARF, OLD TOWN LEIGH

SUNDAY 9TH JULY 2017

11.00 am - 4.00 pm

The Strand Wharf will be transformed into an Italian market with over 15 stalls selling authentic Italian produce. A display of vintage Italian cars will also be on display.

Leigh on Sea Town Council Community Transport Scheme

Our Transport Scheme is open to Leigh on Sea residents over the age of 60, or those who have a disability affecting their ability to travel independently. They must live within the Leigh Town Council boundaries. Our members benefit from a variety of outings including a recent excursion to the Museum of Power at Langford which took us on a journey through the beautiful Essex countryside. We also attended a "Music in the Park" event at the Priory Park bandstand. In November we visited the Alton Garden Centre visit to see the Christmas decorations and commence with some Christmas shopping. The final outing of the year in December is to the Sarah Moore pub for Christmas lunch.

The Community Transport Scheme offers a valuable service to our members who very much look forward to and appreciate these outings. To some it is a rare opportunity to leave the house and socialise. We pick up members from their front doors. Membership to the scheme is free and we will keep you up to date with any trips we have planned and you can choose which ones you wish to go on. If you or anyone you know is interested in joining the scheme please contact Sue on 01702 477 248.



VOLUNTEER DRIVERS NEEDED

The Leigh Town Council Community Transport Scheme could not operate without our Volunteer Drivers and helpers. We always need more drivers and the Council will pay for your mini bus training so if you have a few hours to spare every month please contact Sue on 01702 477 248 or by email suebsmith@leighonseatowncouncil.gov.uk

Planning, Highways and Licensing Committee

Did you know?

- Leigh Town Council is a statutory consultee for planning applications within the Leigh Town Council boundary
- In the past 12 months the committee have met 23 times and considered 247 planning/development applications, 1 highway and 10 licensing applications.

The Planning, Highways and Licensing committee has 9 members. At meetings the committee and members of the public are invited to discuss and make comments about the applications. Relevant comments and objections are recorded and forwarded to Southend Borough Council for consideration during their decision making process.

For a planning application considerations taken into account include:

- **Loss of privacy**
- **Visual impact**
- **Overdevelopment**
- **Design**
- **Overbearing**
- **Conservation Area**
- **Listed building**

In the case of a licensing application a representation against the application must address one or more of the following. When making an objection it is important to base any comments on evidence rather than opinion or perception.

- **The Prevention of Crime and Disorder**
- **Public Nuisance**
- **Public Safety**
- **The Protection of Children From Harm**

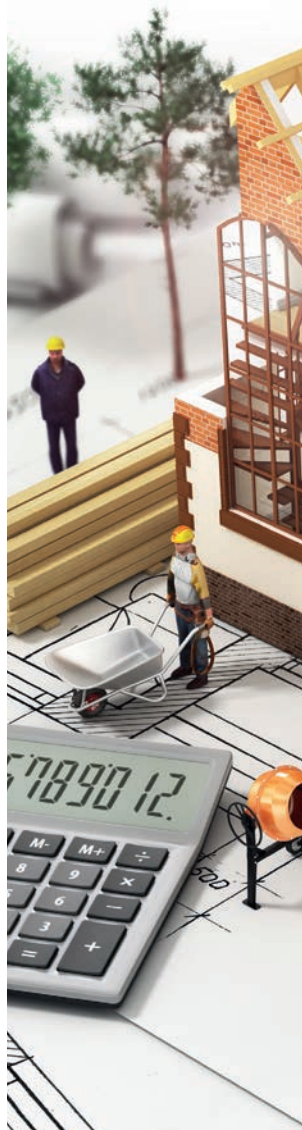
As a committee we endeavour to constantly think about what is in the best interests of the residents of Leigh. We are here to represent you and always welcome your input and comments.

Our committee meetings are open to the public and I warmly invite you to attend one of our meetings to find out more about the process for planning, highways and licensing applications.

In the past year the committee have been pleased to welcome members of the public, developers and architects at meetings where high profile local applications have been discussed.

These applications include the development at the Riley's site in Leigh Road, The Grand Hotel and Haydon House, Underwood Square.

At the time of going to press the applications for The Grand and Haydon House, Underwood Square had yet to be determined by Southend Borough Council. Information about these and other applications can be found on Southend Borough Council's website www.leighonseatowncouncil.gov.uk





As I write this one of the great events of the year is happening in the estuary, the arrival of the Brent geese. These amazing birds fly here from Siberia every Autumn to feed on our eel grass and are a great natural spectacle. They follow on from a summer of events organised by Leigh Town Council on Strand Wharf. We opened the season with an Italian Market accompanied by some iconic Italian cars and an accordion player. This was followed by Music on Sea with performances by various local artists and groups and a seaside atmosphere with deck chairs for a constantly changing audience. Next was one for the children with roundabouts, a bouncy castle etc on Strand Wharf and face painting, dancing, singing and story telling in Foundry car park. This was timed to coincide with the Leigh Lions annual Duck Race. The final event was a Heritage Day showcasing local history combined with some local craft stalls. We also had the pleasure of a visit from Thames Barge Pudge, moored on Bell Wharf and open to visitors.

As many of you will have noticed from the banner outside the Community Centre, Leigh Town Council is 21 years old. In celebration we held a tea party inviting past councillors and people who have worked with the council over those years. It was a very pleasant afternoon and an opportunity for reminiscing.

Half term saw more events for our younger residents at the Community Centre with a Harry Potter themed week of Wizardry and Witchcraft. We now look forward to our Christmas events, the Night of the Lights with its parade on Friday 24th November and our evening of Carols on Strand Wharf on 9th December. This will start earlier this year at 5pm as we feel this will be more family friendly.

Looking further ahead there will be again be activities in the Community Centre at Easter for the children. We have been linking in with the Make Southend Sparkle team to litter pick in Leigh and we also did a cleanup in Leigh Cemetery with the British Legion in September. We had a

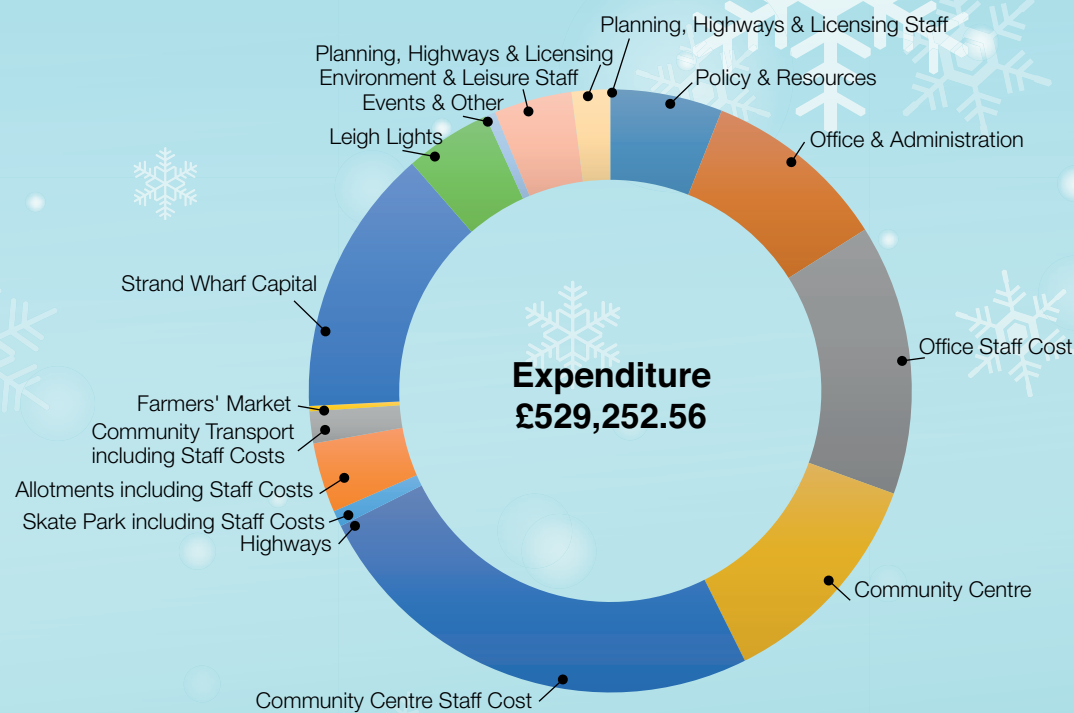
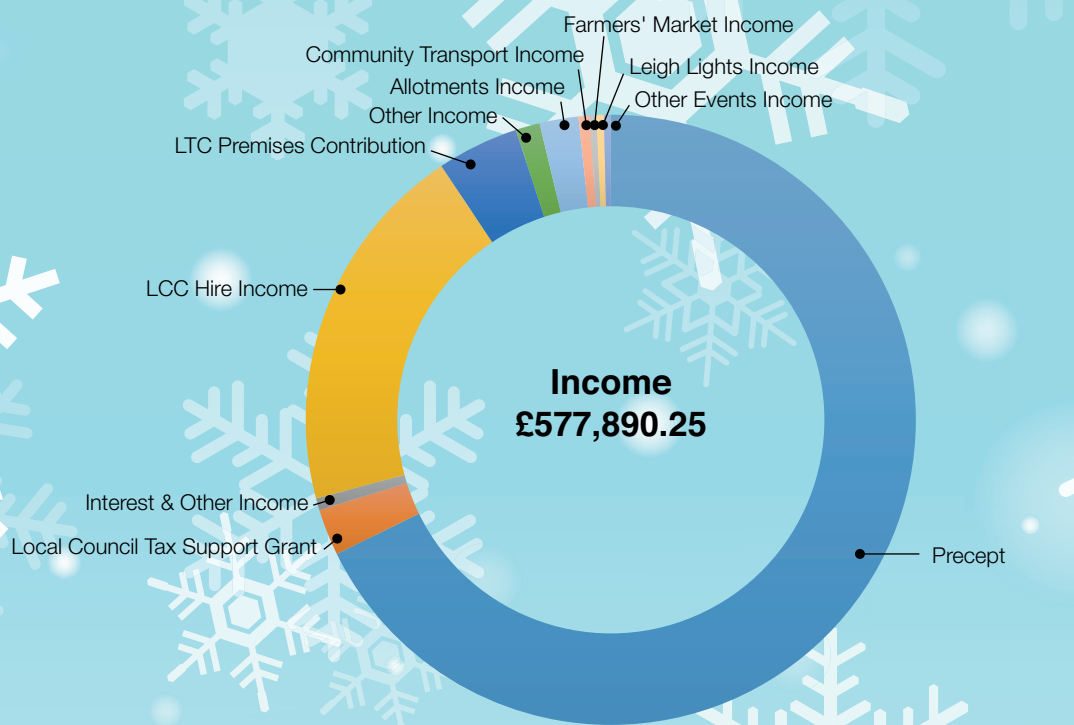
meeting with the Borough Council and Veolia to look at ways to keep our town clean and this is an ongoing project. Any input from residents would be very welcome. We also met with the Borough to discuss Library Gardens and again this is very much on our radar.

Our Community Transport scheme is trundling along and there will be the usual pre Christmas visit to Alton Garden Centre and the Christmas Lunch at the Sarah Moore. However to launch a full programme next year we do need more volunteer minibuss drivers so please contact the office if you would like to offer your services. Our Allotments continue to flourish and you will see reports elsewhere in this magazine. As always we are open to suggestions from you, the residents, for ideas to improve our town.

In conclusion I would like to say a big thank you to our wonderful team of staff in the office, without whom we couldn't function as a council.

Valerie Morgan, Chairman,
Environment and Leisure Committee

Leigh on Sea Town Council 2016/17 Income and Expenditure



Leigh Town Council's Art Wall has hosted four exhibitions over the summer and autumn at the Elm Road community centre.

The Art Wall is a successful initiative by Leigh Town Council promoting the work of Leigh artists and community art groups and was recently recognised by an Essex Association of Local Councils Award for Innovation.

The summer season launched with Open Arts, a community based arts project, working across Essex to help people improve and maintain their own mental health and well being through creative learning, social inclusion and self expression. Research shows that Open Arts courses not only improve mental wellbeing in the short term, but also in the longer term.

The Art Wall provided the venue for the Open Arts exhibition as part of the Leigh Art Trail 20th anniversary celebrations.

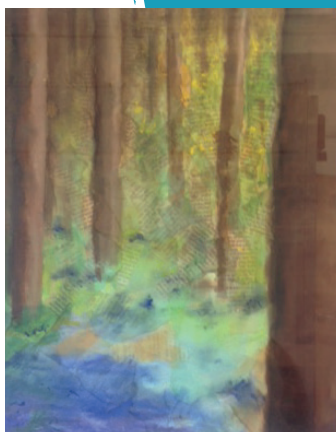
It was followed by 'Sanctuary', the St Clement's Face2face Arts Chaplaincy exhibition celebrating community arts and crafts. Rich in history and tradition, St Clements Church wanted to offer a venue for the arts, an inspiration for artists, designers and crafts people. The 'Sanctuary' exhibition was made up of a series of A4 pieces of artwork designed to hang on the back of the church pews for a week or so in July. Leigh Community Centre offered support and the Art Wall space so that the exhibition could continue for a few more weeks.

The Art Wall then hosted its first solo artist exhibition by Leigh based Christine Sewell. The retrospective show of her work captured her experiences from a local childhood to living in Portugal.

The next exhibition was based on the work of students from the Drawing In the Park Group, which met at Metal Art School in Chalkwell Park, with Leigh based arts tutor and artist Lisa Meehan. It represented the changes during the four seasons in the park.

The current show is an exhibition of work by Leigh Art Trail artists, showing at the Community Centre from 1st December to 6th of January 2018. It marks the beginning of Leigh Art Trail's one year residency in the attic space.

The Art Wall is in the Community Centre stairwell and upper corridor and can be viewed during centre opening hours.



My Time as Artist in Residence by Mary Lister

'Leigh'

This piece, simply entitled 'Leigh' was created whilst engaged in the residency at Leigh Community centre. Through my opportunity of being the resident artist for a year I have experienced so many things that inspire me but most of all the community itself is the colour and texture of this piece. The beautiful backdrops of the estuary and the variety of old buildings never tire me so they make up the main features of this piece using silk screen methods. The rest of this piece was created using textile collaging techniques. I used fabrics and pieces that represented the colourful and interesting people that inhabit Leigh. I chose warm earthy colours and patterned/textured materials to create a layered effect. Some materials are even native to the Leigh area such as parts of colourful deck chair and bunting. I hope the centre staff enjoy this piece as well as members of the community and perhaps when they look at it, can envisage Leigh on a lovely sunny day.



photo courtesy of Mark at Leigh Times

It has been an absolute pleasure working with the community of Leigh whilst engaged in the Artist in Residence programme. I have spent a long time working with the people of Leigh in art classes and on community art projects, some of which would not have been possible had I not had the great resource of the community centre residency space. It doesn't feel like long ago that I was sitting in one of the rooms explaining my plans for the year ahead and I am proud of the accomplishments achieved in this time period. I have strengthened my knowledge for organisation and logistics within art classes, grown in confidence and made many new connections and friends whilst using the centre as a base. I am sure many of you had a go at painting the mural outside Wesley church last year; having the residency space meant that I could store the last few panels and touch them up; I had a great view in my studio looking at those panels you all helped to paint. I am happy to see one of them residing in the conference room in the community centre, acknowledged as a successful community project.

Another community project I have been engaged with is the poppies project for the 'Southend Schools Festival of

Remembrance.' If I hadn't have been artist in Residence at this time I may have never met Beth Hooper and Alistair Deacon who have been working on a wonderful project which aims to connect people together and reinstate the importance of remembrance day through shared experiences and war stories. Together with numerous schools and organisations, including the Royal British Legion, we have been making thousands of clay poppies made individually by the children and adults of the community of Southend and Leigh. This project has seen wonderful spirit with people offering their help and time consistently throughout. These are the kinds of projects I aimed to be involved with but I never knew how to source, so the centre has been a great resource in bringing these opportunities along to me.

I used the studio space for my own projects such as to experiment more with my love for printing. I built a dark room cabinet which I could keep my screens in for a screen printing process and I had a light installed kindly by the caretakers so I could expose the screens. In turn this improved the quality of my classes; my pupils were able to do more technical processes having the resources on hand.

I could also experiment with my painting and sculptural methods having had more space and freedom to do so in a perfect environment. When the Leigh Art Trail came around I spent a long time in the studio making my sculpture as well as illustrations and prints for the Hockley Art Trail. I also used my studio space for reading, quiet contemplation and planning.

I wish I could have spent more time in the space over the year but sadly it has come to an end too soon and I shall have to take my art adventures to different places. I am so grateful to the council and community centre for having me for a year; it has been a great progression in my career towards being a professional creative. I would like to say an extra thank you to all of those who have supported me, my superstar parents, the centre staff and caretakers, my art class members, Vivien Rosier with her help on the art wall and getting me set up as well as Jill Adair and Carole Mulroney for interviewing me and offering this opportunity and finally the community of Leigh have been wonderfully encouraging and inspiring to me.

Thank you all, Mary

Studio Ten : A Community Art Project

St James Ward, Leigh on Sea



Imagine how thrilled I am as not only the Councillor for St James Ward but as an artist also, to be able to support and promote, the innovative ambitions of Mel Pilgrim with his eco-friendly and well designed Studio Ten, in Elmsleigh Drive.

Mel who is himself an artist, told me that his inspiration for this new Art Hub, came from knowing a very, talented, young, student who sadly could not continue his work after his graduation, due to not being able to afford adequate, studio space. Mel added that he then wanted to provide studios for artists, who might otherwise be forced into giving up their art for lack of decent facilities

Studio Ten is a complex of fifteen studios, designed with large windows on each side to allow light to flood through them, and these generous, work spaces overlook a relaxing, sensory garden. There are two galleries, one large floor level space for exhibitions from outside artists and a smaller upstairs space to allow resident artists to showcase their work. Also a large conference room has been added for meetings and for running art workshops.

The studios are to be offered free to students, burgeoning artists, those with both physical and mental disabilities, and ex-servicemen. Mel is a great believer in the validity of art as being therapeutic and has invited The Art Ministry and Open Arts to become involved with Studio Ten. Mel also spoke of his plans to hold Coffee Mornings with in the lower gallery, and Antique Markets in the covered, car parking area at the weekends.

Andrew Hall, the first resident artist of Studio Ten, is on the Board of Trustees and is its Art Director. He has been working in his studio/gallery many months and was a participating artist in the 2017 Leigh Art Trail. Andrew also teaches and will be collaborating with Mel to achieve the aims of what is to be a very, valuable, community, art centre.

I am excited at the tremendous possibilities this venture holds for our area.

Cllr Jill Adair.

Face2Face Arts Chaplaincy of St Clement, Leigh on Sea by Mother Cherry

A long, long time ago, in what now seems a very different place and time, an idea began to percolate. It seems that this idea, shapeless as it was then, was not just percolating in one head but two as when I met Father Clive, for the first time, three years ago, he said that he had also been thinking along the same lines!

So the idea of an arts chaplaincy, supported by the people of St Clement's in varied ways, but looking out towards the art-loving people of Leigh on Sea, was born. With the twin intention to encourage the artistic and creative talents within the church community but also to celebrate and be a blessing on those arts activities which take place outside in the community as well. Our prayer is that we will show our relevance to our town and celebrate the creativity around us, knowing that in doing so we echo the joyful, creative, nature of our God.

Without further ado I began to gather around me a small group of people who I knew, shared a love for the arts and for this community. Ideas for initial endeavours soon flowed, but we decided to concentrate on two main projects for the year. Therefore, in February this year, St Clement's hosted a Private View for the Access to Art and Design Students' Royal Opera House Challenge, which featured projections of the students' posters for Madam Butterfly, music and drinks. We did not know on that evening that one of the students had been selected as the overall winner, and another as the runner up!

Our second project was an exhibition of work relating to the theme of Sanctuary, and as we discussed the venture we met with Councillor Vivien Rosier who offered the Community Centre art wall so that the exhibition could move from the church to

the community centre for a further 4 weeks. The exhibition was a great success with 30 artists exhibiting 80 pieces of work raising £220 for the women's refuge.

Next year, we intend to continue this collaboration between St Clement's and the Community Centre with another exhibition and events linked to the celebrations of the centenary of the end of the First World War. We are planning to hold a monthly series of Sunday afternoon talks on Art, Faith and War from July- November with the Bishop of Chelmsford as our keynote speaker; and a musical concert to celebrate and bless the arts in July 2018. We hope that the chaplaincy will work within the community to serve and support the life and creativity of our unique town.



Events at Leigh Community Centre



The summer was bursting full of fun, affordable events for little ones with a variety of entertainers running workshops and activities at Leigh Community Centre.

We were once again joined by the Arts Ministry with Arts & Crafts, the South East Essex Organic Gardeners who provided a Seed Bomb workshop. Marko Sparko put on a dazzling Magic Show, and Bex Balloons provided two Balloon Modelling Sessions, which even Councillor Jill Healey got involved with.

Jolly Kids Castles provided Under 3's Soft Play and First Steps Dance organised an incredibly popular Beauty and the Beast Dance Workshop. Imagination Station attended with an exciting Dinosaur Puppet Show and The Holly Jolly Company ran a swashbuckling Pirate Party.

We aim to provide a variety of School Holiday Activities all year round. If you would like to be updated about our upcoming events, email enquiries@leighcommunitycentre.com to join our Mailing List. We also love to hear your feedback; please let us know if you have enjoyed an event or if you weren't able to attend as we can always run activities again!



Summer Season on Strand Wharf

This year the Council tried something a little different and replaced the Maritime Festival with a string of events taking place on Strand Wharf over July & August.

Since Strand Wharf's redevelopment in 2016 it has become a popular public square and so the Council decided to take all the favourite elements of the previous Maritime Festival and spread them over four Sundays to offer relaxed and additional enhancements to Leigh life with no road closures for Old Leigh Residents and providing opportunities for family and friends to enjoy a varied programme. All events were free entry.

First up, Strand Wharf was transformed into an Italian Piazza, with a traditional Italian Market boasting a wide variety of stalls including breads, pasta, pastries, cheeses, oils and more. There was also a display of Vintage Italian Cars and an accordion player to transport visitors to an Italian street.

Secondly we held our own mini music festival "Music-on-Sea" with performances from Belfairs Academy Choir, Isabel Oliver, The Salvation Army, Yardarm Folk Orchestra,

Hoy Shanty Crew and Leigh Orpheus Male Voice Choir, with visitors invited to pull up a deck chair and enjoy.

Our third event was our Kids Zone day, which had a whole host of activities to keep little ones entertained. Strand Wharf was transformed into a fun fair with rides, soft play and trampolining. The Art Ministry, Cliffs Pavilion and Revelation Art provided arts and crafts, and our interactive performance area was buzzing with cheerleading, hula hooping, ribbon dancing from Party Belles, singing and storytelling from Talking Tots and a special appearance from Princess Belle and Spiderman from Princess Gatherings.

Our last event was the Leigh Heritage Day, previously held in Leigh Community Centre. The attending stalls were all there to celebrate the wonderful history and culture of Leigh on Sea and the neighbouring towns. Exhibitions were provided by The Endeavour Trust, Thorpe Bay Angling Association, Rayleigh Town Museum, Essex Hundred, Blade Education, The Saxon King, The North Thames FLAG and local author Ian Yearsley.



This event was organised with support from the Leigh Society and was accompanied by a craft fair and entertainment from the Hoy Shanty Crew. Visitors also enjoyed the Lower Thames Rowing Club's annual Pier Race as well as the Thames Sailing Barge, Pudge, displayed on Victoria Wharf.

Leigh on Sea Town Council and Leigh Society's, Cllr Carole Mulroney said, "The day had been a great success with everybody showing a keen interest in their local area. Strand Wharf was the perfect setting, the sun shone and everyone enjoyed themselves."

Leigh Allotments Orchard Group



Dessert apple Rosy, most recent Essex variety.



Late-maturing dessert apple Sturmer Pippin from around 1800.



Chelmsford Wonder, a cooker from 1870

The orchard has been in its most productive phase with heavy crops on many trees, including for a change some of the pear trees. Picking will continue into November with late-maturing varieties such as Sturmer Pippin which is traditionally picked around the 5th of November. Also ready will be the apple Rosy which is the most recently developed Essex variety which originated a little way up river at Bulphan. Picking tends to take place every two or three weeks, each time in the middle of the season resulting in a total of up to sixty pounds, most of which get distributed to members of the Group and some turned into juice.

In September the Manchester Drive allotments held an open day and we ran a display for the orchard with about eighteen of the varieties that we grow on display.

We hold three or four work parties each year, mainly to keep the grass and unwanted blackberry growth under control and the last one of the year will be in early November when the grass gets its annual full cut, mainly using scythes and sickles.

The orchard site in the allotments off Manchester Drive covers around a quarter of an acre and supports approximately fifty fruit trees of over forty different varieties, the vast majority having been developed in Essex between 1629 and 1985. I can be contacted through Leigh Town Council if anybody would like to get involved in helping to look after the orchard.

David Hammond

TREE CHARTER

Leigh on Sea Town Council has become the first Tree Charter Branch in the Southend Area, more than 70 organisations from around multiple sectors across the country have joined forces to create a Charter for Trees, Woods and People that will guide policy and practice in the UK.

The Charter was launched on 6th November 2017 and for every person that signs the charter a tree will be planted by the Woodland Trust. You can support the campaign by signing the Tree Charter online or by signing the book held at Leigh Community Centre Reception.

Our role as a Charter Branch is to build engagement with the charter campaign amongst the local community and to explore ways to improve things locally for trees and people.

Although you must be over 18 to sign the Charter you can still show your support by adding a leaf to our Community Centre Tree. Activities launched over the Summer Holidays with the Leigh Art Trail running arty workshops to allow children to decorate their own individual leaf.

THE 10 TREE CHARTER PRINCIPLES

- 1 Thriving habitats for diverse species
- 2 Planting for the future
- 3 Celebrating the cultural impact of trees
- 4 A thriving forestry sector that delivers for the UK
- 5 Better protection for important trees and woods
- 6 Enhancing new developments with trees
- 7 Understanding and using the natural health benefits of trees
- 8 Access to trees for everyone
- 9 Addressing the threats to woods and trees through good management
- 10 Strengthening landscapes with woods and trees



Autumn's arrived at Marshall Close Allotments



It is definitely feeling autumnal at the allotments. After a spring and summer of sowing, planting, watering, weeding, tying back, staking up, netting, hoeing, strimming and mowing, oh and yes, some harvesting, we are now winding down.

Jobs now involve cleaning the plots by clearing up spent crops and digging over the ground incorporating compost for next year. Most plots have had a very productive year with good crops of Onions, potatoes and beans, together with more exotic crops such as Fennel, Chillies, and Sweetcorn.

We've had our fair share of pests and diseases but largely these have been controlled by organic methods, it's surprising how effective soapy water is in controlling members of the aphid family.

Many plots also have crops that can gathered throughout the winter, such as Sprouts, broccoli, Kale (very trendy just now) and leeks. Of course the potatoes, onions, garlic and shallots we picked earlier in the year are stored in a cool place ready to eat throughout the winter. The winter is also a period for planning for next year and scouring the seed catalogues choosing which varieties to plant for next spring.

Gardening does not stop through the winter months it just changes its emphasis, from a physical activity, to a planning and purchasing phase, and by early March things will start growing , and gardeners will be raring to go, to get back on their plot again.

...and meanwhile at MDAS

It has been an excellent year, bumper crops, great harvests.

- **Sweet corn picking has been a competition between us and the Badgers**
- **In November raspberries were still being picked**
- **We came third in the Southend Annual Allotment competition**
- **We are in the planning stage of extending our clubhouse**
- **It's not all fruit and vegetables here: the fox is sunning himself, the birds singing, the woodpecker drumming away on the trees. We also have the rare stag beetle**
- **We are now putting the allotment to bed for the winter, plenty of jobs to do**

Hope next year is as good a year as we've had this year.

Happy allotmenting!

The Chairman, MDAS





Held in the Community Centre on Elm Road, has been successfully promoting and selling local produce since 2000. Originally set up by Mrs Janet Hammond, who was also an LTC councillor between 2000-2004, and chairman of the allotments committee, it has been run by her husband David following Janet's sad death. David has always been a champion of the market however after many years David has now taken well earned retirement so the market is being managed by the Leigh Town Council.

There are stalls selling everything from cheeses and meats; soaps and skin products; beers and honey; vegan balls and organic vegetables; gifts of various sorts; chutneys and jams; and even flowers and plants all from Essex. Leigh is renowned for its independent shops and The Farmers Market adds to that independence, providing fantastic, sustainable local products, which have not had to travel the world. The local Farmers' Market provides a wide range of stalls selling all different types of home grown and homemade produce. The stallholders must have grown or made the goods themselves and all traders come from within a 30 mile radius.

The Market is a great reminder of just what vibrant county we live in. Essex is far more than just another Home County, it is beautiful and provides a wealth of history as the Local Heritage Centre in the Old Town illustrates and of course Essex has been one of the gateways to London for centuries.

The market buzzes with enthusiasm for local goods not readily available elsewhere. With Christmas on the horizon and the special Christmas Market on Saturday 23rd December you can stock up on free range chickens, turkey, meats or vegan/vegetarian alternatives: orders can be placed at the market on 17th November. It really is very impressive and of course like all unique local businesses needs your support. As one of the longest running markets in the Essex area, it prides itself on delivering local produce to residents.

Whether you like natural smoked foods, fresh dairy products, delicious homemade cakes and jams, artisan patisserie or vegetarian and vegan food there really is something for everyone. And you can even sharpen up everything from your kitchen knives to your garden tools courtesy of a precision sharpening stall. The market is open on the third Friday of every month from 9am until 1pm.

Keeeeeep Shopping!

William Connon, Market visitor and customer

Learn more about all of our regular traders

Ann Cushion - From Leigh, sells set and runny honey from her local hives

Bean & Boy Handmade Soap - From Southend, family run business making handmade soaps. Gift boxes, baby soaps and sensitive skin products available www.beanandboy.com

Box Boy - Handcrafted wooden boxes with a local twist

Donald Swinburne - From Shoebury, brings a range of chutneys, jams and marmalades

Elixirs of Life - From Canvey Island, offers award winning healthy skin products made from natural sources www.elixirsoflife.co.uk

Flower and Home - Local florists offering beautiful hanging baskets and flower displays www.facebook.com/flowerandhome

Gambardeli - Offers a range of vegan products including meat free steaks, sausages, burgers and deli items www.gambardeli.co.uk

Highfield Farm - From Althorne, bring beef joints, steaks and mince from pedigree beef Shorthorn cattle, plus free range eggs

Hoppily - Hoppily bring the finest craft beers from local, independent brewers to discerning beer-lovers www.hoppily.co.uk

Leigh's Fine Cheeses - Cheesemongers with over 150 British & Continental Fine Cheeses in stock and a large range of Charcuterie & Gourmet Pies www.facebook.com/leighscheesebarn

Leigh Larder - Leigh Larder is a local firm producing home made houmous, nut butter and seed butter from fresh ingredients- all vegan, Paleo and gluten free

McCarthy's Country Store's extensive range of patisserie and traditional baked items are something to feast your eyes upon and stir the senses www.mccarthyscountrystore.co.uk

Muffin's Mobile Tea's - From Rayleigh, brings a selection of sweet treats, cakes and scones www.facebook.com/MuffinsTeas

The Old Barn Smokery - From Hanningfield, delicious smoked fish, meats, cheeses, flour, oils www.hanningfieldsmokehouse.co.uk

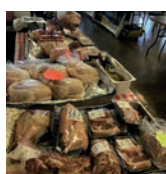
Rhyne Park Farm - From Bures, offers pork from rare breed, free range pigs plus lamb products from Layer Marney Farm www.farmshop.uk.com

Sarah Green's Organics - From Tillingham, bring a wide range of seasonal vegetables www.sarahgreensorganics.co.uk

South East Essex Organic Gardeners - In-depth knowledge on organic gardening and plants for sale seeog.org.uk

Sharpening Solutions - Quality sharpening, great customer service and a quick turnaround all at a reasonable price www.sharpeningsolutions.co.uk

Urban Farmers - From Southend, locally grown organic Oyster Mushrooms and mushroom products www.urbanfarmers.co.uk



Leigh on Sea Town Council win the EALC's Innovation Award



Leigh on Sea Town Council has this year won the A & J Lighting Award for Innovation from the Essex Association of Local Councils.

The Town Council were chosen because of the amount of projects and events they run throughout the Town. Including their Artist in Residence scheme and Affordable Art Wall at Leigh Community Centre, the transformation of Strand Wharf from an "illegal" car park to a thriving public square hosting an array of events, and for their school holiday programme that attracts over 300 children to the Community Centre.

The Council were delighted to receive the award, which verifies the work they do within the Town.

Connecting Threads

'Connecting Threads' is a large scale project that is looking for willing volunteers of all ages and abilities to contribute to the making of this textile hanging. Community groups and schools are also welcome.

To complete the project we need 1,130 hand made textile pieces, each measuring 4.5 x 6 inches. These textile pieces represent each of the

1,130 garment workers who died in the Bangladesh, Rana Plaza building collapse of 2013. Beside highlighting the fast fashion industry and the plight of the garment workers this project also draws attention to how we no longer make our own clothes like our mothers and grandmothers use to, plus we are not passing on these skills to the younger generation.

A variety of sewing techniques can be used in the making of the individual pieces such as Kantha stitch, free hand machine embroidery, collage, found and printed text and many more cloth related techniques.

It is estimated that this large hanging when finished will be 7.7 feet wide and approximately 24 feet long, and the deadline is the 5th May 2018 when a photo of the finished piece can be submitted to the Festival of Quilts Birmingham, in the Art Quilt section. All participants in this project will be acknowledged.

For further information on how you can be part of this project please contact Gwen Simpson lead artist or Hannah Mumford at connectingthreadspj@gmail.com



Town Council apprentice wins Learner of the Year Award

Leigh on Sea Town Council were thrilled to hear that their apprentice David Skeels, has won the "Learner of the Year:



Learning for Work" Award from Southend Adult Community College.

David was taken on as an apprentice in Facilities Services in 2016 and has since been made a full time member of staff as a caretaker at Leigh Community Centre. This is the second apprentice that the Town Council has taken on in three years, both of whom have progressed to full time positions.

The Council are thrilled to be supporting young people in finding a career.

CHRISTMAS SHOW

The opening exhibition of work by LAT artists, as part of a year long artistic, community residency



1st December ~ 6th January 2018

LEIGH ART TRAIL at LEIGH COMMUNITY CENTRE



Leigh on Sea ART TRAIL

Leigh on Sea has a vibrant art scene, with many local painters, sculptors, ceramicists, photographers and printmakers exhibiting their work in galleries nationally and around the world. But every year, for one week in June, they come together in one of the country's longest-running art events, the Leigh Art Trail, showcasing their talents in the community where they live and work.

Preparations start early, because it takes many voluntary hours to organise the Trail. As soon as one finishes, it's on to planning the next year's event.

Former Chairperson and now Projects and Legacy Co-ordinator, Bronwyn Oldham, explains. 'It really is a year-round job. So much effort behind the scenes goes into making the Trail a success for just that one week of the year. And that got us thinking... just as

we don't stop working when the Trail is over, neither do our artists. While it isn't possible to have a year-long Art Trail, it is possible to use a central exhibition space for a year and the search for a suitable location started.'

Leigh Town Council has been running its 'Artist in Residence' project at the Community Centre for several years. Prospective artists bid for access to studio space, as well as the use of display walls around this much-loved Leigh landmark.

A bid went in, it was approved and we were delighted to start our residency at the beginning of November. Hence, Leigh Art Trail & Leigh Town Council @ Leigh Community Centre!

So, what have we got planned? First up is our Christmas Show, from Friday 1st December until Saturday 6th January. A mixture of 2D and 3D work, with Leigh Art Trail favourites

such as Emma Bell, Mark Taylor and Jonathan Trim showing alongside new artists including Ian Segrave, Shelley Jupitus and Rowena Wright. It's the usual eclectic mix of mediums, genres and styles, and all the work is for sale.

Further ahead, exhibitions will include 'The Art of the Abstract' and 'The Local Landscape', as well as opportunities for those who have always wanted to create their own masterpiece, but never got round to it.

A series of free workshops for young and old will be held over the course of the residency. Run by Leigh Art Trail artists, they will be a great opportunity to gain insight into how the artists work and offer a chance to study their techniques.

All information will be published on **www.leigharttrail.com** as well as on Facebook and Instagram.

LEIGH TOWN COUNCIL NOT CONSULTED

Dear Councillor,

The intake for Sept 2016 was oversubscribed at Westleigh and 26 or 27 catchment children didn't get a place, I believe. Yet the intake for Sept 2017, that has just happened, 5 out of catchment children attained a place. There will always be exceptional years. But the figures SBC use don't take into account that some children go to private or faith schools. It's all guess work as no one really knows what the birth rates will be going forward or how many people with children will move into or out of the area. There is some concern by the local community, for SBC to look into the disreputable practice of some families gaining a place at Westleigh either from short term letting or by moving out of the area after attaining their school place.

Another big issue on an internet forum is that Building Developments don't appear to need to ensure adequate school places let alone Doctors and NHS services etc. Plans appear to be approved with little or no requirement to consider the impact of these decisions.

At the moment, families who have lived in the area for years are facing losing their current catchment school, myself included as I lose my Westleigh catchment under Model K. Without the figures being used standing up to full scrutiny.

There is also an issue that Southend Councillors whose houses will move from a current catchment have to excuse themselves from meetings and are not allowed to fight for residents. Yet councillors whose houses will remain in a catchment are allowed to fight for and represent residents. They are losing out due to a change they can't do anything about, but if they stand to gain, by having a smaller catchment area, they can fight for that. Doesn't seem fair to me.

I do hope LTC do have an opportunity to speak with SBC soon about this. Something that predominately affects Leigh surely can't be decided upon without input from yourselves.

SOUTHEND'S SOLUTION FOR A WORST CASE SCENARIO

Dear Editor,

I have seen that Leigh Town Council has expressed its concerns regarding the proposed changes to Leigh Catchment Areas. From the perspective of a parent living in an area affected by these proposals I would like to make the following points:

- 1 Model K is the third suggestion of how to redraw school catchment boundaries in five months. Each suggestion affects different families, it brings worry to some and relief to others. Inevitably this means residents and communities within Leigh are being pitted against each other. The sad thing is that it is completely unnecessary.
- 2 Parents spend a lot of time deciding where to set up a family home. Distance and chances of securing a place at the local school is a key consideration. Families impacted by model K live in roads that always secure a place at their catchment school. This proposal punishes those that researched the area before starting a family.
- 3 When the consultation process began, Southend council seriously considered making no change to the school catchment but had received initial guidance suggesting that its catchments might not be reasonable. Since then the school adjudicator determined that the West Leigh catchment area was fit for purpose in 2018. She highlighted that living in a catchment area does not and cannot guarantee a place to that particular school; therefore, Southend council must not prepare for worst case scenario and accept that in some years there might be a shortfall of places.
- 4 A change of catchment means further to travel from home to school. This will take additional time and for some will be the difference of whether a second parent can work. A reduction of income will impact family life for many and could force others to move.
- 5 Model K does not address people that game the system. Southend Council does not have any reasonable process in place to detect fraudulent or gaming applications. Inevitably the council are moving honest residents out of their preferred catchment area to allow dishonest families a place at that school. For many parents that had planned for their children to attend a school rated as 'Outstanding' by Ofsted will now have to prepare for a school that is two ratings lower at 'Requires Improvement'



Parents and residents especially in the Leigh North Street primary school area, please write and express your views BEFORE December 15. Further information available at: www.southend.gov.uk/schoolcatchment.



NO, TO REVISED MODEL K

Dear Councillor Ward,

School catchment areas in Leigh have been the subject of hot debate in the last few months. In the pre-consultation I categorically opposed model A and the drastic effect it would have on the local school communities, with the most badly affected being North Street with approximately 55% of the current catchment being removed.

I could see some merit in model B and the idea of a super catchment as it allowed fluidity and movement which in years where there is no over subscription (most years for North Street!) would mean most children are able to access their local school.

Out of all the discussions came Model K. The compromise it offered made sense. It had a much less drastic impact on local schools. Although I must point out that it is still North Street bearing the lion's share of changes at 27% of current catchment compared to much smaller percentages of 15% and 4% at West Leigh and Chalkwell.

However, revised model K now on consultation, is extremely unfair.

For this model K to be reasonable and fair to all local residents, areas 2 and 3 should be given the same priority at their respective old catchments, North Street and Chalkwell that area 1 is being given at West Leigh.

It is very clear that the strong reluctance from Legra Trust to allow this has meant the Council was forced into this revision in order to gain the support of Legra (which includes Darlington and which as an academy does not need to follow these admission rules). Legra appear to be holding all the cards to the detriment of the local community schools - North Street & Chalkwell - which have been serving their communities for over 100 years.

Original model K with priority for all areas at their 'old' catchment will enable natural movement between schools in years of over/under subscription but also has clearly defined catchments which makes the catchment/admission process simpler for residents and the Council.

Original model K (before revision) is therefore a good compromise model with a clear admission process whilst still offering choice and access in years where there is no over subscription.

LEIGH TOWN COUNCIL NEEDS A VOICE

I wonder if you can advise if Leigh town council is aware of the proposed changes to school catchment areas?

And if there is any help the council can offer regarding this?

And, indeed, what Leigh Town council's feelings are regarding this?



ACCIDENT WAITING TO HAPPEN

I'm writing to you with reference to the school catchment area proposal.

I know this is a hot topic at the moment and I've completed the questionnaire to state my points but really wanted to put it forward to my local Councillor.

The catchment area proposals don't affect my children as they are now at senior school but, I'm really concerned about the safety and environmental issues with Model B.

I live 10 doors away from Westleigh School and parking and parents driving is already a major issue.

Westleigh School office have told me it's an accident waiting to happen. I agree with this, not to mention the amount of pollution the cars bring into the area.

With Model B this will get significantly worse. Not only with parents driving into Westleigh residential area but parents who live near the school who would normally walk their children will now have to drive them to a school 1 mile away. Darlington school is in a half mile radius of 5 other schools. This will then impact on this area not to mention the traffic the small roads of Leigh can't handle.

I've already seen a few near misses of children crossing the road at the top of Marine Avenue and I'm aware of an accident on Darlington Grove recently.

I really hope Leigh Town Council can take this into consideration.



Keeping vulnerable people safe in Leigh on Sea

A joint initiative to give adults and young people with additional care and support needs, a safe-haven whilst out in Leigh on Sea, has recently been launched. The 'Keep Safe' scheme is being led in partnership with local People's Parliament organisation for adults with learning disabilities, SHIELDS and Leigh Town Council.

Anyone aged 16 or over with a disability or Aspergers can join in the countywide scheme. Those who do, receive a yellow Keep Safe key fob, with space to write their name and the number of someone who can be contacted should they need them.

A number of local shops and businesses have already signed up to the Keep Safe scheme and displaying a Keep Safe sticker in their window, indicate they are able to offer a vulnerable adult help, support and access to a telephone, to call someone

they trust. The scheme already successfully operates in other areas.

Leigh Town Council Chairperson Jane Ward, says: "This is a great project that has already worked well in Southend-on-Sea and I am very pleased this is now expanding out to Leigh."

"Keep Safe is invaluable if a vulnerable person feels distressed, anxious, unsafe or confused, or if they have lost their phone or wallet for example. The council are committed to protecting the most vulnerable members of our community and it is great to see everyone working together to launch this important initiative."

Businesses or retailers who have signed up These include, Curvy Girl, Uptomen, Leigh Library, Mencap Charity Shop, Leigh Heritage Centre, Oasis, The Coffee House

and of course the Community Centre.

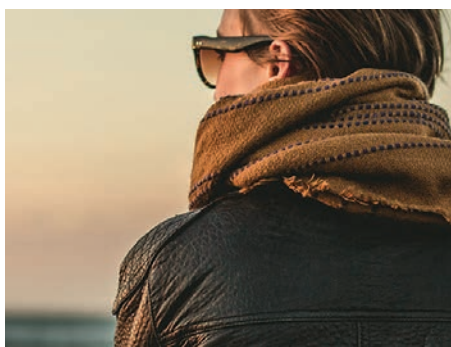
Heather Wilson, Shields Manager says "We are very proud to be launching Keep Safe in Leigh on Sea. We hope it helps vulnerable people to have the confidence to enjoy the many shops of Leigh knowing that there are places they can go if they need help. We would also like to thank the venues that have signed up for the scheme and would welcome any others who wish to join this community scheme to contact us."

Further information about the scheme can be found at www.keepsafeessex.org

Or for more general information about Shields please call 01702 534544 or e-mail: info@shieldsparliament.co.uk



Domestic abuse in Leigh on Sea



In their lifetimes, one in four women and one in six men experience domestic abuse, yet many people do not know where to get help or support.

Local charity SOS Domestic Abuse Projects has been supporting people affected by domestic abuse in Southend for more than 40 years. Previously known as Southend Women's Aid, the charity offers a range of advice and support including:

- One to one appointments for information, advice, support and advocacy for adult victims of domestic abuse at the Dove Crisis Centre
- A 24 hour telephone helpline
- Safe temporary emergency accommodation (refuge)
- Counselling and psychotherapy for adults and children in recovery from abuse
- Support for children and families through Fledglings Child and Family Service
- Work with children and young people in schools through Break the Cycle
- Awareness raising programmes in the local community

If you, or someone you know of, is experiencing domestic abuse, please contact SOS Domestic Abuse Projects on 01702 302333. You will be able to speak to an experienced Domestic Abuse Practitioner about your experiences, and who will help you to find the best outcome for yourself and your family. If safe to do so, you can visit the charity's website at www.sosdap.org. **In an emergency, always dial 999.**

It's the big 40 for Fives Records!

Fives is a family business which was opened by Peter Driscoll in 1977 at 55 Elm Road - hence the reason it was called Fives. The shop had to move to new premises at 22 The Broadway (the site of the Co-op supermarket) about 18 months later because it took off and more space was desperately needed. Soon after, a second branch was set up in Rayleigh which Sandra (Peter's daughter), fresh out of school, was running. It thrived for 25 years before closing in September 2006. Meanwhile, the Leigh shop moved to its current location in 2004 where it has flourished in Peter and Sandra's expert hands.

What music are you listening to at the moment?

REM's 8th studio album 'Automatic for the people' - Sandra explained that this album was first released in October 1992 and she is very excited because a freshly mixed version in the new Dolby Atmos format is due to be released in November to celebrate its 25th anniversary. Peter said that anything by Otis Redding would be fine by him.

Who is your favourite recording artist and why do you admire him/her?

Peter has been a Rock and Roll fan since the mid 1950's and said that Fats Domino is his favourite artist.

Sandra found it a bit more difficult to decide and wavered between Kate Bush, Black Sabbath and Audrey Hepburn and Rex Harrison singing on the soundtrack of 'My Fair Lady'!

You've seen many changes in recording formats, which one is your favourite and why?

Without a moment's hesitation, Peter and Sandra both said 'vinyl'. They explained that vinyl recordings are of a much higher quality, greater depth and have a warmth about them. In comparison CDs lose a lot of recording information and can sound 'tinny'. Downloads can be of a very poor quality but people tend to listen to them to help them decide what vinyl albums to buy.

Music has been an important part of your life – do you perform, sing or play an instrument?

A resounding 'NO!' from both.

Is the come-back of vinyl a passing fad or is it here to stay?

Definitely here to stay – people have recognised the superior quality and durability of vinyl.

What is special about coming into a shop like yours rather than buying online?

Peter and Sandra explained that it's all about the personal touch and knowing your customers. Over the past 40 years, they have established a group of loyal customers with a wide range of musical preferences. Peter and Sandra know which albums are likely to appeal and order them in bigger numbers to make sure their customers get what they want.

What are the listening trends of the people of Leigh?

They tend to lean towards the jazzy and folk genres. Peter explained that these trends have not really changed over the years and thought that they might be influenced by what was on offer in local venues, events and festivals. Film soundtracks are also very popular – Sandra said that the people of Leigh go crazy for them!

What age groups come into your shop?

People of all ages. Peter and Sandra said that the people of Leigh have educated their children to listen to good music and develop a taste for quality. A recent visitor to the shop was a child of 5 who knew everything about David Bowie's music!

Other record shops have closed down - what is your recipe for success?

Hard work and a refusal to retire!

by Cllr Vivien Rosier



By shopping in Leigh, you are supporting our local economy and local people. The choice to shop independent is about more than just spending money, it's also about being thankful and showing appreciation for those who make our town a great place to live.

To find out more:
www.facebook.com/loveindependentleigh.

You can also show your support by using
#loveindependentleigh on Instagram.

Grant Award Scheme Recipients

Every year Leigh on Sea Town Council awards grants of up to £500 to worthy community charities and projects. Over the years they have supported the Leigh Regatta, Folk Festival, British Legion and many more initiatives.

Grants are awarded twice a year in March and September, and can be used towards room hire at Leigh Community Centre or to help local causes. Please contact the Council for more information on how to apply council@leighonseatowncouncil.gov.uk

Southend Area Bus User Group

The Southend Area Bus User Group "SABUG" was formed in 2001 to liaise with all commercial bus companies in the area, Essex County Council and Southend on Sea Borough Council. SABUG endeavour to deal with any problems advised by members by contacting the relevant company or local authority. The grant provided by the Council enables SABUG to hire a room at the Centre for the committee to discuss various issues that have been raised. Further details can be obtained from our website:

www.sabug.kk5.org

British Legion

The Leigh on Sea Branch of The Royal British Legion were last year, awarded The Nigel Bird Shield; a trophy awarded for the largest percentage increase in membership over the previous year.

"Our Branch - which raised almost £34,000 for the Poppy Appeal last year, are indebted to the Town Council for the general support we receive - but in particular for the support offered to the Branch by the Grant Award Scheme which allows us to use the wonderful facilities of the Centre on a reduced or completely free basis."

In recent years the Legion have launched their Annual Poppy Appeal with a Coffee Morning and Cake Sale at the Community Centre.

Endeavour Trust

The Grant Award Scheme contributes to the maintenance and running costs associated with the historic Endeavour vessel.

The Leigh on Sea Endeavour Trust restored this splendid craft for community and educational use in 2001. The oldest surviving example of a Leigh on Sea fishing boat was painstakingly restored with



Grant Award Scheme - Leigh Regatta



Grant Award Scheme - Endeavour Trust

financial support from many sources. The ship is moored in Leigh Creek, acting as a fitting memorial to generations of Leigh fishermen and, those who perished at Dunkirk.

She was built by the Leigh shipwrights Cole & Wiggins as a cockler in 1924, and spent her working life in local waters. In 1940, along with five other Leigh boats, she was one of the flotilla of "Little Ships" which rescued troops from the beaches at Dunkirk.

Leigh Regatta - a community event

Back in August 2014, the Leigh Regatta was called off with only six weeks to go. The Lions Club of Leigh on Sea stepped in and, with the help of 3rd Chalkwell Bay and 4th/6th Leigh Sea Scout troops and other local volunteers, succeeded in putting on a smaller-scale Regatta. Having only a modest budget, we'd applied for a Grant Award from LTC and were delighted to be chosen.

LTC have continued to support Leigh Regatta, enabling us to provide art materials and other sundries in the children's entertainment area. This has allowed the Regatta to remain a friendly, community celebration all the family can enjoy – a continued highlight in Leigh's summer calendar.



Grant Award Scheme - Blade Education



Grant Award Scheme - Royal British Legion

Blade Education

Imagine a sea of bright red poppies, all individually made by local school children, open to everyone, commemorating those that died in the First World War – that is the aim of the Southend Schools Festival of Remembrance Project. The project is provided by Blade Education, a not for profit company, and focuses on helping school children to engage with remembrance and understand how memories are an important part of all our lives.

SSFR is all about reconnecting local children with the stories of our community from the World Wars. We are working with 24 schools around the Borough to build an installation on the cliffs below the Southend Cenotaph.

"Thanks to the grant we received from the Council we've been able to engage with the wider community by running 'Poppy Days' at the Community Centre. These fun and creative workshops have attracted participants from all sections of the community who have made poppies with us and contributed to the learning materials and research aspects of the project.

The staff at the Centre have been tremendously helpful and welcoming. For more information visit **www.ssfr.org.uk** or contact ssfr@blade-education.org.uk or call 020 7097 3935.



Winter Wildlife at Leigh on Sea

Winter is a time of year when we welcome our winter migrants traveling from their breeding grounds in order to feed on vegetation and invertebrates in the mud. One of Leigh on Sea's iconic species is the brent goose which start to arrive from Siberia during September. The UK's smallest goose travels all this way to feed on the eel grass that Leigh has to offer and will stay in the UK right through till March. The Thames estuary is key habitat for this species attracting over 10,000 which equates to 10% of the population that visits the UK.

It's also a great time of year to look out for flocks of waders including knots, dunlin and redshank. Knots can be described as a dumpy, short-legged, stocky wading bird which can be identified in winter as being grey above and white below. They form huge flocks in winter where they wheel and turn in flight, flashing their pale underwings as they twist and turn. As for dunlin they are one of the most common small waders you can find along the coast. Breeding in the uplands of Scotland, Wales and England they can be found in their largest numbers in winter along UK estuaries.

Lastly the little egret is one of the most easily identifiable birds for a bird watcher of any ability. It has entirely white plumage with a black bill and black legs with yellow feet. Little egrets have only really established themselves in the UK in the last few decades with the first time significant numbers being recorded in 1989 and breeding for the first time in Dorset in 1996. Starting off as a winter visitor it is now starting to establish itself as a resident bird to the UK.

Martin Payne

The Wonders of the Ancient Woodland on your Doorstep

Belfairs Park and Nature Reserve is Ancient Woodland (woods that have been around since at least 1600). Ancient Woodland makes up only 20% of the woods of Britain and we have lost half of it since the 1930's. It is very precious as it is home to rare species, species that survive only in the rich biodiversity of Ancient Woodland. The Nature Reserve at Belfairs is one of only 64 biological Sites of Special Scientific Interest in Essex. This designation indicates how important the area is....and all of this is on your doorstep.

Belfairs Woodland Centre is run by Essex Wildlife Trust who, in partnership with Southend Council, manage the woodland to preserve and enhance the wildlife therein. To fund the work done by our ranger and his work party of volunteers, the Trust relies on the people of Leigh and Southend to come and have a cup of tea and a piece of cake in the Centre and take part in the activities we run for adults and families. To maximise the amount of money which goes directly to the wildlife and environment of Essex, we have over 100 volunteers who give their time for free to run the Centre and all its activities.

We have activities for children throughout the school holidays and for pre-schoolers during term time. In December, Santa is coming to see us at the Centre. In the new Year, we start a brand new event called Mission X. This is aimed at 8-14 year olds and is based on the astronaut training programme to encourage fitness and a love of science. We have walks for Carers and for people who are interested in different aspects of the woodland. All our events are on our website www.essexwt.org.uk/reserves/Belfairs or our facebook page or ring the Centre on 01702 477 467. We are open 7 days a week 9am-5pm in the summer and 9am-4pm in the winter.

We would love to see you. *Alison Askwith*



Things are Astir on Two Tree Island

Fed up with the bad press the Island gets and the continuing struggle various agencies have against fly tippers, litterers, dogs' mess and anti-social behaviour, a local River Thames Warden, enlisted the help of Town and Borough Councillor Carole Mulroney to see how the various stakeholders on Two Tree Island could work together to improve the Island.

Thus came about TWIG, the Two Tree Island Group.

On the ground, TWIG comprises a small army of volunteers representing all the Island's user groups. Meanwhile, the stakeholder side is a Steering Group of those who can directly influence the management of the Island and with powers to effect change, namely, the Borough Council, Veolia, the Police and Essex Wildlife Trust. This is the first time that these groups have met in this way so it is definitely a step in the right direction.

Cllr John Lamb, Leader of Southend Council, has expressed his support as Two Tree Island is so important to Leigh as a whole and should be the subject of collaborative working between all councillors and the other stakeholders.

The Group has already discussed the problem issues which have been getting the Island a bad reputation in recent times and will in future be looking at ways to enhance the Island whilst protecting wildlife and birds alongside passive recreational uses.

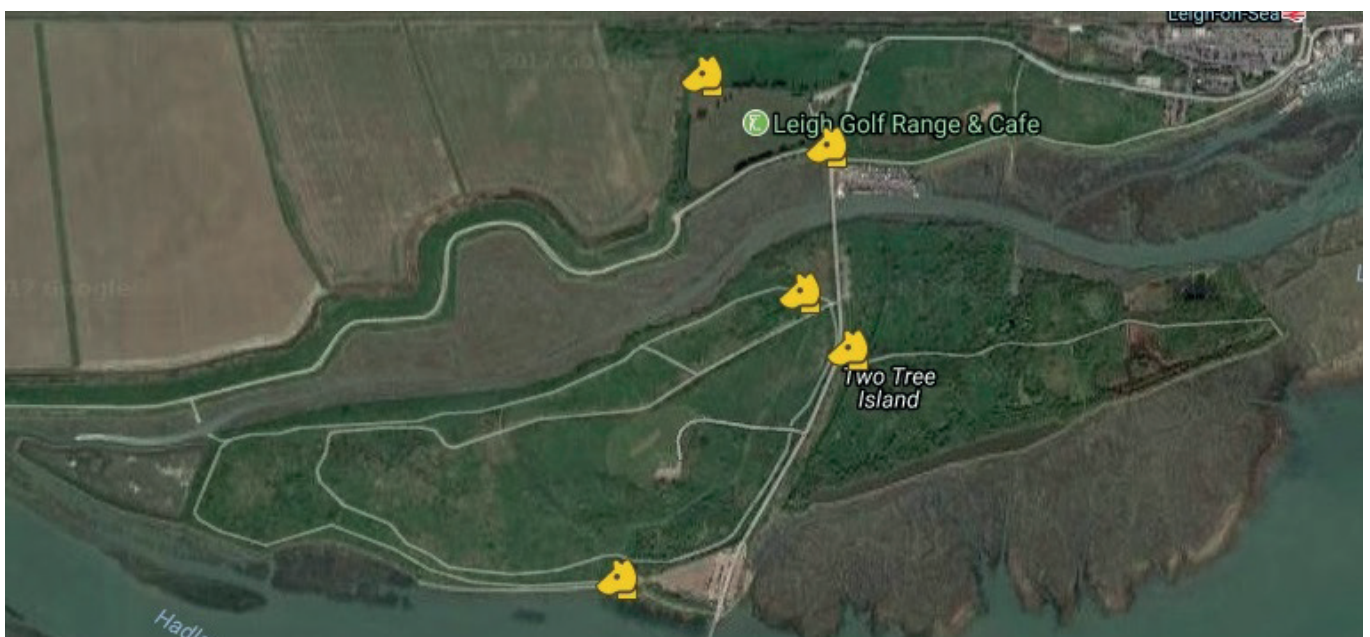
Southend Beachcare, Essex Wildlife Trust and Make Southend Sparkle have been running very well-attended litter picks on the Island and Leigh Marshes and anyone interested in joining them can find out more on www.facebook.com/southendbeachcare. There will also be dog awareness days and other events to bring the community together to look after this beautiful area.

While there will always be litter bugs, fly-tippers and dog walkers who leave their black bags to litter the place, there are things we all can do to alleviate these problems. For instance, if you spot any fly tipping or wish to report a street cleansing or dog bin issue you can use the website

www.southend.gov.uk/MySouthend where your views can be submitted anonymously.

Carole says 'I believe we can make a real difference to Two Tree Island through good liaison and a willingness to work together and that is good for the Island and good for Leigh and all our residents and visitors.'

As a start and in the interests of helping dog walkers, the map below shows the positions of dog bins.



N-Act Theatre in Schools Linked

NEW: Internet safety production

Not just for young people! This play is for anyone who uses the internet.

'Linked' is set in our future – in a world where no secret is safe, there is no freedom of speech, and all choice has been removed. A novel look at a hugely important topic of our time.

Despite the growing awareness of how we need to keep ourselves safe online, despite the many videos, information seminars and supportive websites, many still fail to acknowledge that they need to do more to keep themselves safe. There are still too many stories in the news of bullying, grooming, trafficking, radicalisation, identity theft – and sadly the consequences of depression and self-harm which can be brought about by the negative impact of social media. The play is a unique, humorous and hard-hitting journey into a world that could exist if we continue to take such little care with our use of the internet.



You can book us to perform at your venue, and receive a Showcase Discount!

Contact us:

sharon_williams100@outlook.com
www.sharonwilliamseducational.co.uk

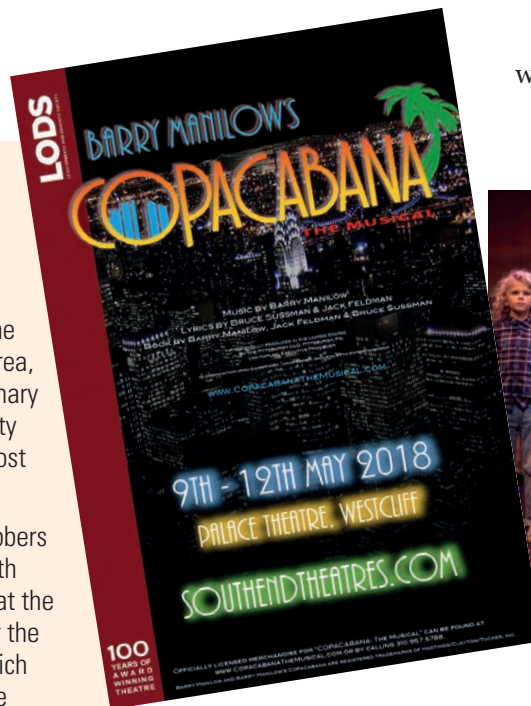
Leigh Operatic & Dramatic Society

LODS are well established as one of the best amateur dramatic groups in the area, and have been celebrating their Centenary throughout 2017 with three shows Betty Blue Eyes, Forbidden Broadway and most recently Whistle down the Wind.

LODS production of Andrew Lloyd Webbers "Whistle down the Wind" was met with many standing ovations during its run at the Palace Theatre in October. The cast for the show included 30 children many of which attend schools in Leigh on Sea, and the company and audience were marvelled by the young talent on display.

Looking forward to 2018, LODS next production of Barry Manilow's Copacabana is set to be a vibrant and exciting theatrical event. The story follows Lola an aspiring actress who travels to New York to pursue her dreams. After meeting Tony she becomes a Copa Show Girl and a dramatic adventure in Havana unfolds. Copacabana is on at the Palace Theatre from 9th – 12th May 2018.

Tickets are available now from
www.southendtheatres.com



Whistle down the Wind.





TRAVELLING SAFELY AND CONFIDENTLY BY BIKE



Cycle Southend are committed to shaping Southend into a city of cycling, through our intention to ensure the bike becomes a part of everyday life for everyday journeys. We want to get more and more people choosing to cycle; both recreationally and as a way of travel.

We offer cycle training to all ages, incorporating Balance, Learn to Ride, Levels 1, 2 & 3 Bikeability, as well as adult cycle training for all abilities. Bikeability is a cycle training programme focused on providing practical skills and an understanding of how to cycle on today's roads. This course awards everyone who takes part with the skills and confidence required to perform all kinds of cycling. For further details please visit: www.bikeability.org.uk.

Through the South Essex Active Travel (SEAT) project we can now offer free adult cycle training to anyone wishing to use a bike for travel into their workplace or place of higher education.

We can also supply Travel Maps to show all cycle routes and shared space paths across the Southend Borough. Travelling from Leigh to Southend by bike? The Prittle Brook Greenway starts in Leigh and offers an off road route straight into the heart of Southend, and onto Shoeburyness.

To find out more about how Cycle Southend can help you, please contact us in one of the following three ways:

www.cyclesouthend.co.uk

cyclesouthend@southend.gov.uk

01702 215338 or 01702 215595

Southend-on-Sea Borough Council: HOW TO...

Whilst Leigh on Sea Town Council may not be responsible for waste collections or issues with public highways, we still like to assist all our residents by making sure they know how to report problems to the Borough Council.

All residents can register online with MySouthend, this online portal allows you to report issues such as missed waste collection, and any issues regarding public toilets, graffiti, fly tipping and more. The portal is easy to use and can be found on the Council's website www.southend.gov.uk by searching "MySouthend" in the top right hand corner.

To report problems such as defective street lighting or issues with public highways there are large main links on the website's homepage under the heading of "Report Something". From here you are directed to an online form in which you can write in detail every part of your complaint.



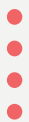
CHRISTMAS FAYRE

A Festive Shopping Event!

SATURDAY 2 DECEMBER 2017 12PM - 4PM
LEIGH COMMUNITY CENTRE



CRAFT, GIFTS,
FOOD & MORE



FREE
ADMISSION



FACE
PAINTING